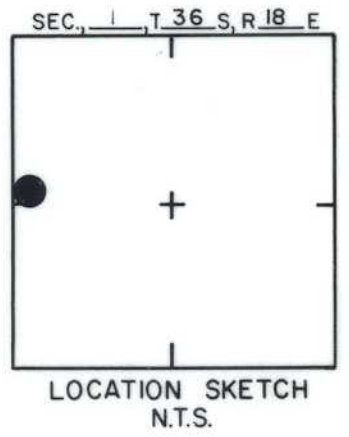
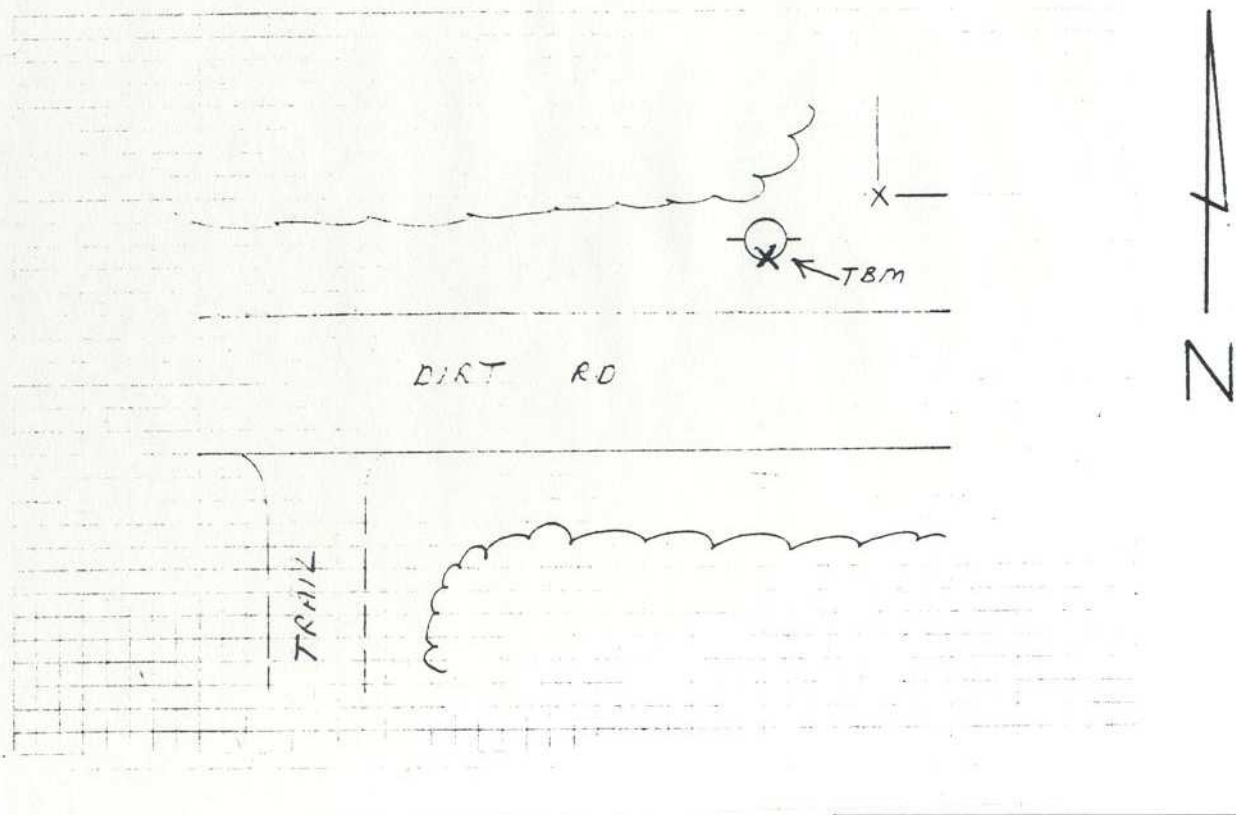


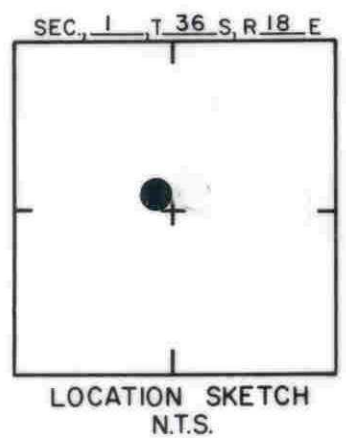
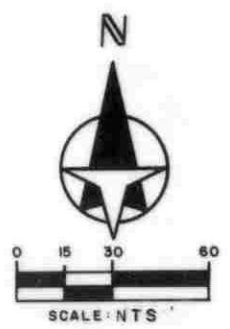
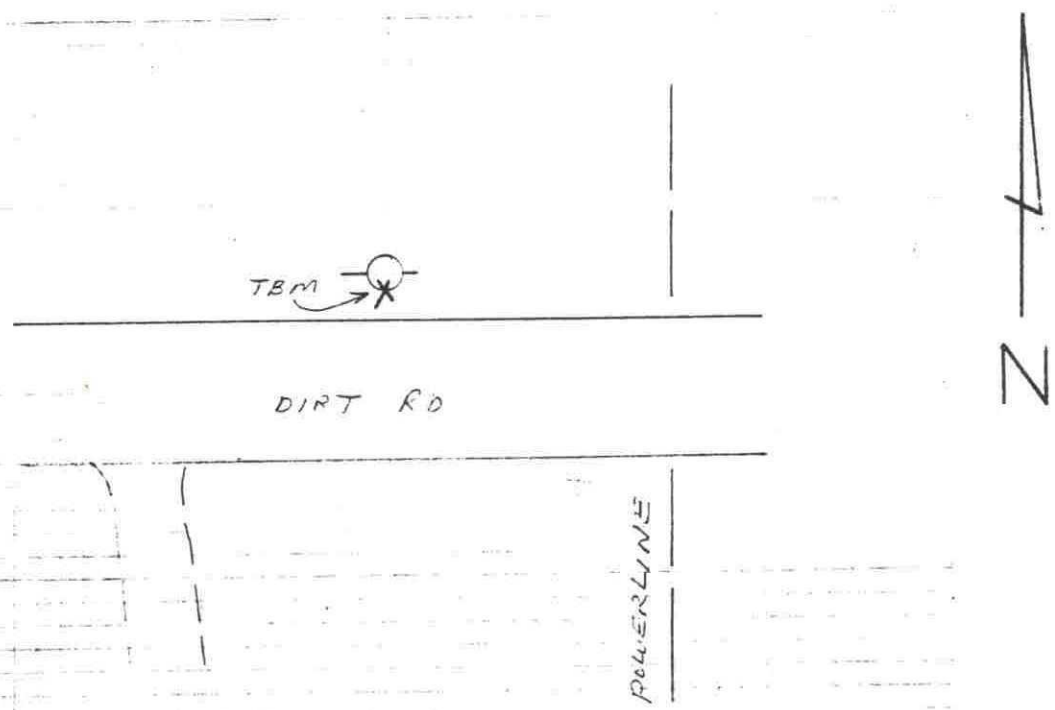
TO REACH THE MARK FROM NEAR WEST 1/4 COR. SECTION 1;
 TBM IS RR SPIKE IN S. FACE P-POLE



SARASOTA COUNTY TRANSPORTATION DEPARTMENT ENGINEERING DIVISION			
BENCH MARK DATA SHEET			ELEV. 22.42
DATE DRAWN: 1-27-87		BY: RJJ	
REF: SWFWMD HFH 139			DATE 10/81
ELEV. BASED ON BM. NO. NOS			BM. NO. 14

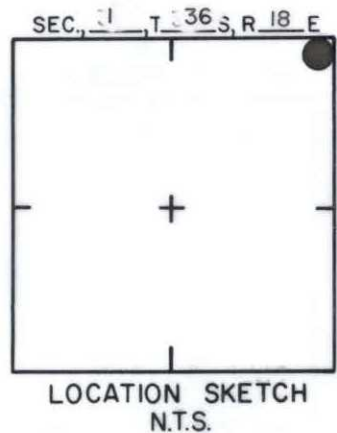
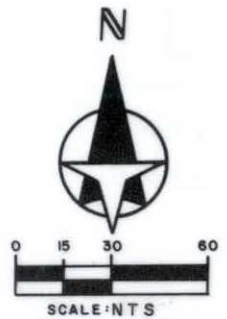
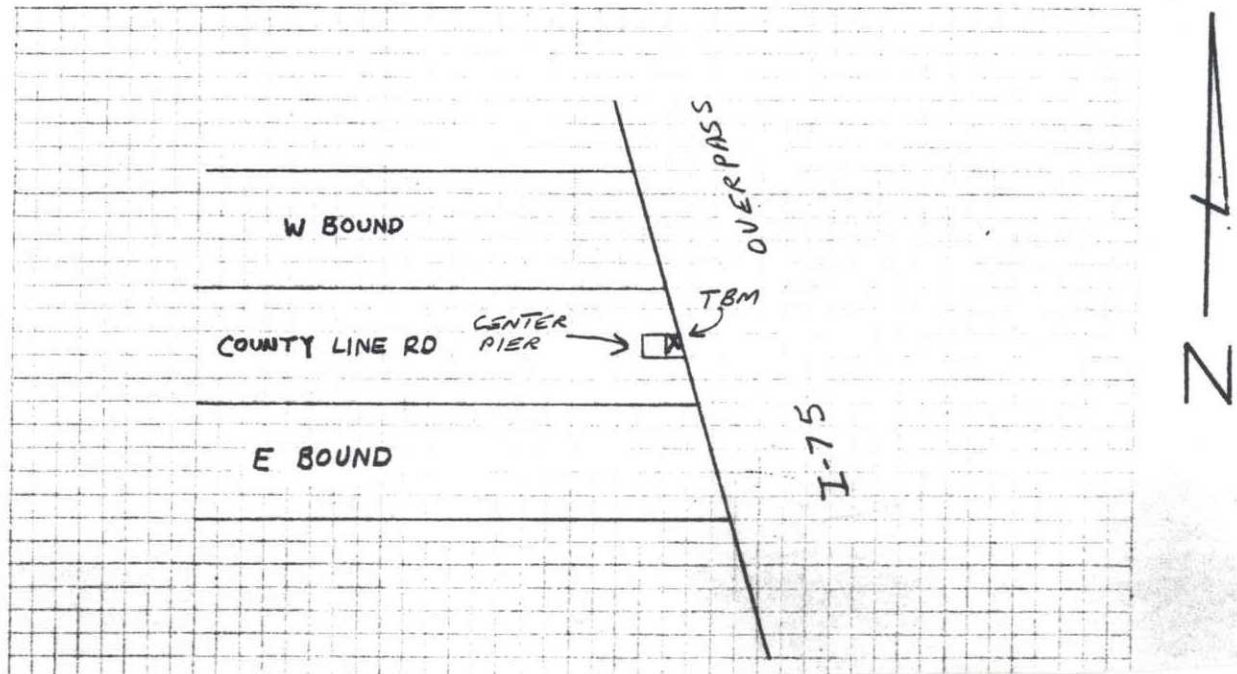
DATE	TYPE	FB. PG.	BY
REVISIONS			

TO REACH THE MARK FROM NEAR CENTER SECTION 1;
 TBM IS RR SPIKE IN S. FACE P-POLE



SARASOTA COUNTY TRANSPORTATION DEPARTMENT ENGINEERING DIVISION				
BENCH MARK DATA SHEET			ELEV. 24,44	
DATE DRAWN: 1-27-87 BY: RJJ			BM. NO. 14A	
DATE	TYPE	FB. PG.	BY	REF: SWFWMD HFH 140 DATE
REVISIONS				ELEV. BASED ON BM. NO. NOS

TO REACH THE MARK FROM AT INTER COUNTY LINE RD & I-75;
 TBM IS CHISELED SQUARE ON WEST END OF
 CENTER PIER BELOW OVERPASS



SARASOTA COUNTY TRANSPORTATION DEPARTMENT ENGINEERING DIVISION			
BENCH MARK DATA SHEET			ELEV. 31.94
DATE DRAWN: 1-30-87 BY: RJJ			BM. NO.
REF: SWFWMD HFH 159 DATE 10/81			14B
REVISIONS			ELEV. BASED ON B.M. NO. NOS

DATE	TYPE	F.B. PG.	BY
REVISIONS			