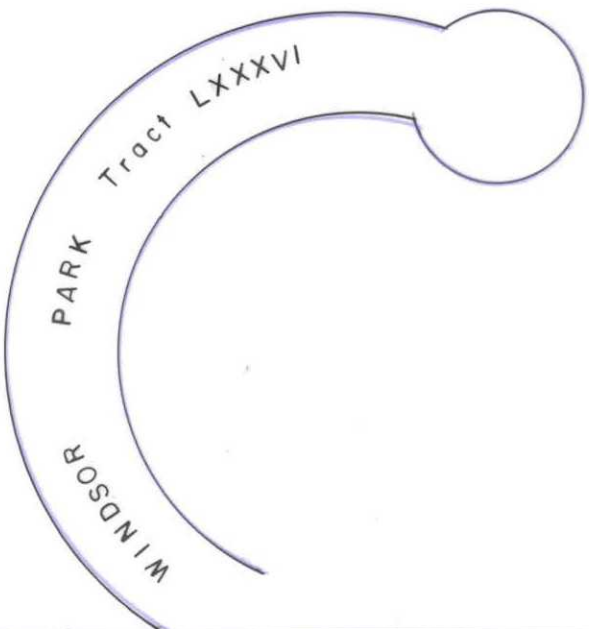
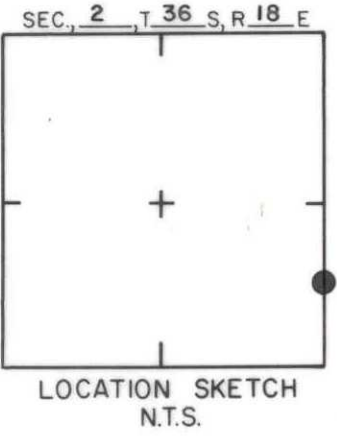


THE MEADOWS, UNIT 2 PB 30/1-B



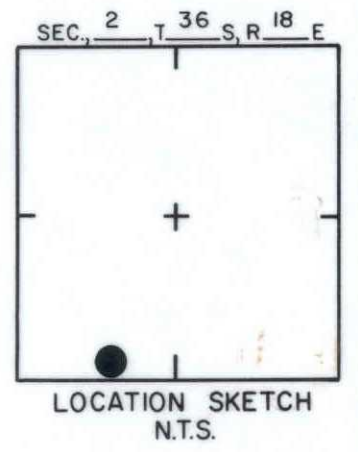
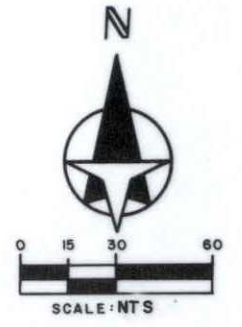
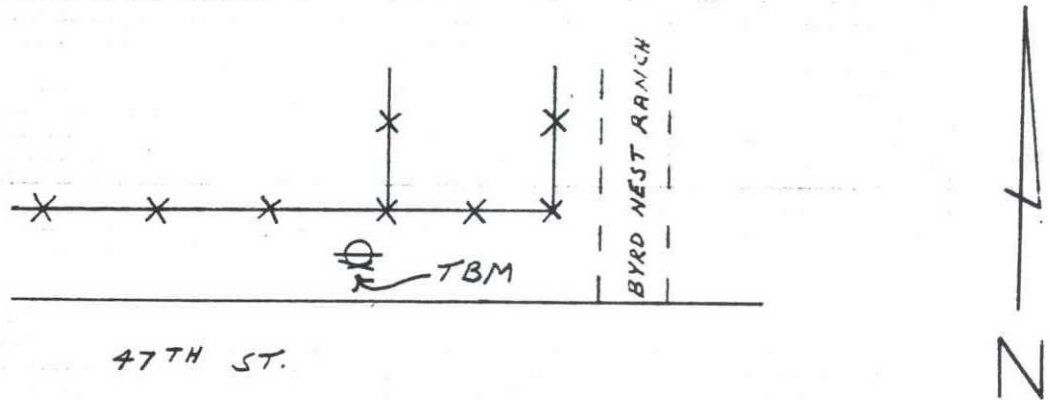
Tract LXXXIX
 EASTERLY LINE OF S.E. 1/4, SEC. 2
 WESTERLY LINE OF S.W. 1/4 SEC 1
 T 36 S, R 18 E.
 T 36 S, R 18 E.
 BM 17

SARASOTA COUNTY
 TRANSPORTATION DEPARTMENT
 ENGINEERING DIVISION

BENCH MARK DATA SHEET		ELEV.
		22.71'
DATE DRAWN: SEPT, 1985 BY: RJJ		BM. NO.
REF: F.B.	PG.	DATE
ELEV. BASED ON BM. NO. NOS B 93		17

REVISIONS			
DATE	TYPE	F.B. PG.	BY

TO REACH THE MARK FROM INTER. 47TH ST. & GREENWOOD STABLES, TBM IS A RAILROAD SPIKE IN S. SIDE OF P-POLE



SARASOTA COUNTY
 TRANSPORTATION DEPARTMENT
 ENGINEERING DIVISION

BENCH MARK DATA SHEET

ELEV.

29,36

BM. NO.

17A

DATE DRAWN: 1-26-87

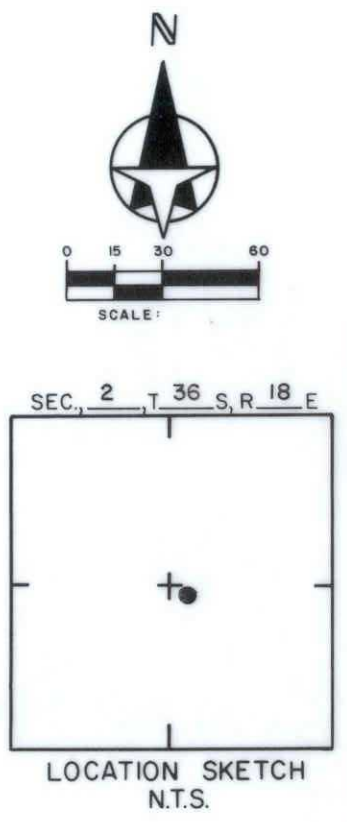
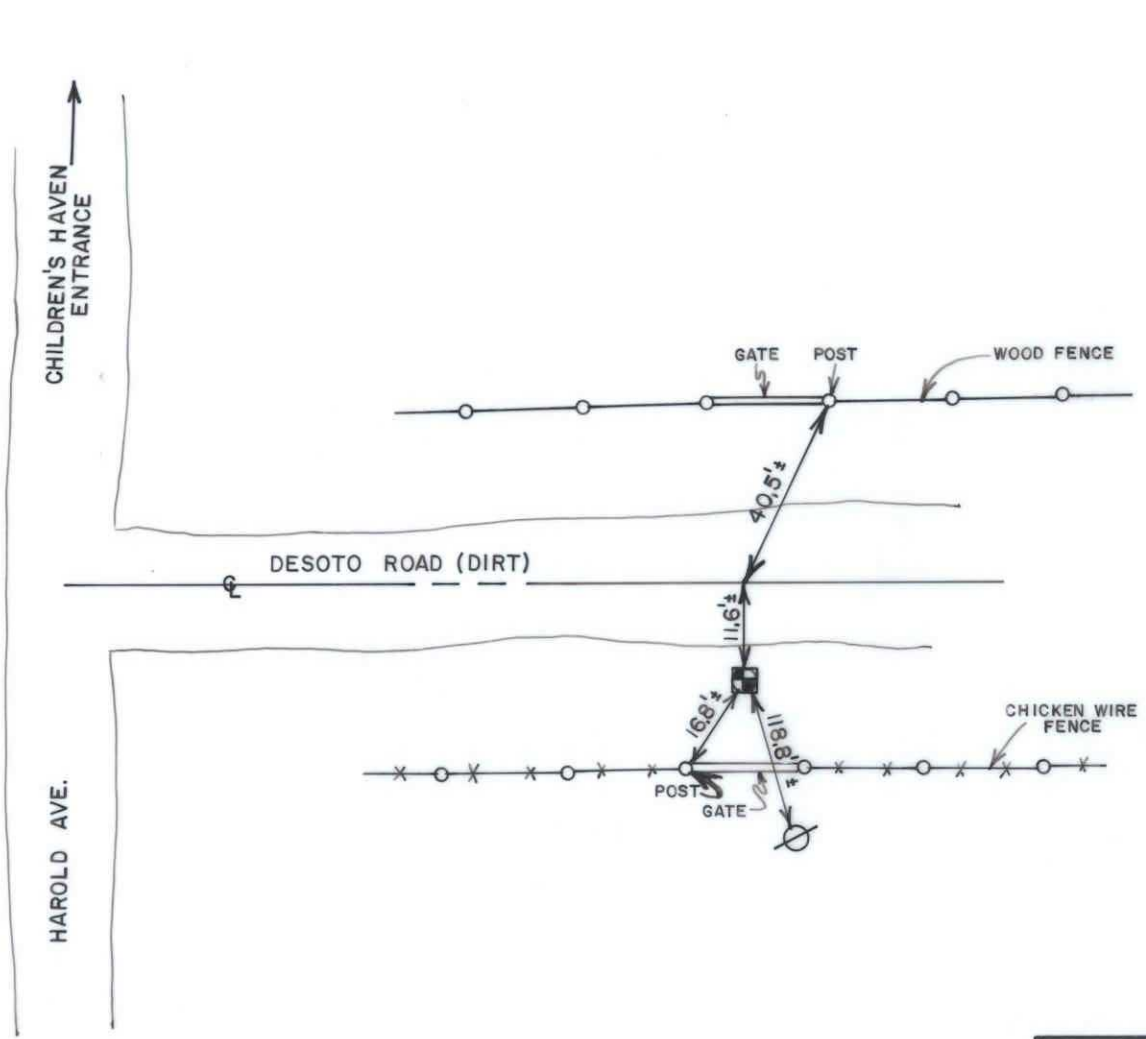
BY:

REF:SWFWMD HFH 128

DATE 10/81

ELEV. BASED ON B.M. NO. NOS

DATE	TYPE	FB. PG.	BY
REVISIONS			



Sarasota, N. of; junction of U. S. Route 301 and Desoto Road; E. on Desoto Road for 2.4 mi to Mink Road; turn right and go S. on Mink Road for 0.45 mi to 47th Street, thence E. on 47th Street for 1.35 mi to graded rd. N.; N. for 0.5 mi to Desoto Road, thence E. on Desoto Road for 0.15 mi.; under high voltage powerline; 40.5 ft SSW. of gatepost; 39.9 ft SSE. of gatepost; 118.1 ft N. of W. one of two power poles; 11.6 ft S. of center of graded rd.; in 4 by 4-in. concrete post 0.2 ft below ground; FSDT standard disk stamped "17-70-808" BOB

SARASOTA COUNTY TRANSPORTATION DEPARTMENT ENGINEERING DIVISION				ELEV.
				28.549'
BENCH MARK DATA SHEET				BM. NO.
DATE DRAWN: 7/27/87		BY: RJJ		17B
DATE	TYPE	F.B. PG.	BY	
REF: F.B. 259 PG. 44 DATE 7/24/87				ELEV. BASED ON BM. NO.
REVISIONS				

EL Changed from 13.63 to 28.549' 4/14/89 RJJ			
REVISIONS			