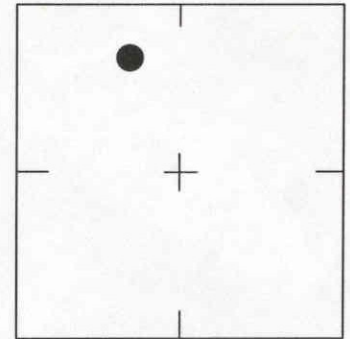


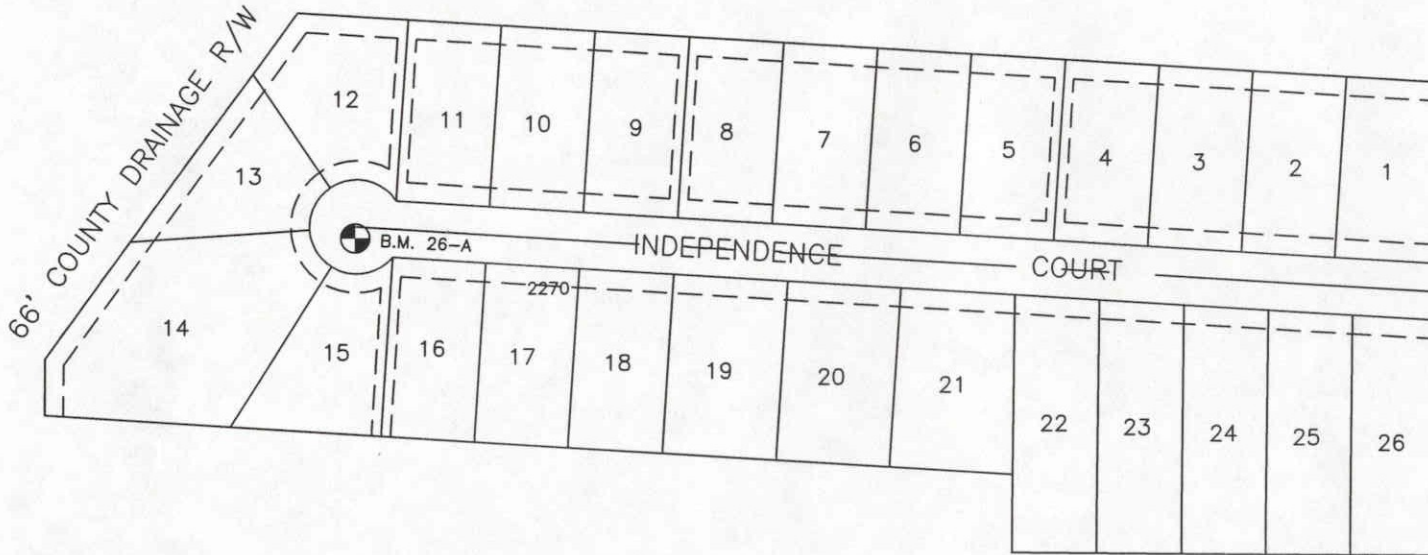


SCALE: N.T.S.

SEC., 7 , T. 36 S, R 18 E



LOCATION SKETCH  
N.T.S.



NORTHGATE CENTER, UNIT NO. 4,  
PB30 PG46

SURVEYOR'S AFFIDAVITS:

O.R. 1886 PG. 1542  
O.R. 2057 PG. 0906

REVISIONS / REMARKS

THIS REPLACES THE PREVIOUS  
DRAWING DATED 2/86 BY PJB

B.M. IS A RR SPIKE  
LOCATED 5' SOUTH OF RADIUS PT.

SET BY: Walter R. McCracken, III

SARASOTA COUNTY

TRANSPORTATION DEPARTMENT  
ENGINEERING DIVISION, SURVEY/MAPPING SECTION

BENCH MARK  
DATA SHEET

DATE DRAWN: 05-26-00 BY: KPD

REF.: PB 30 PG. 46A DATE: 01-29-86

ELEV. BASED ON B.M. NO. 23-D

ELEV.

18.40'

B.M. NO.

26-A

bm 26a.dwg